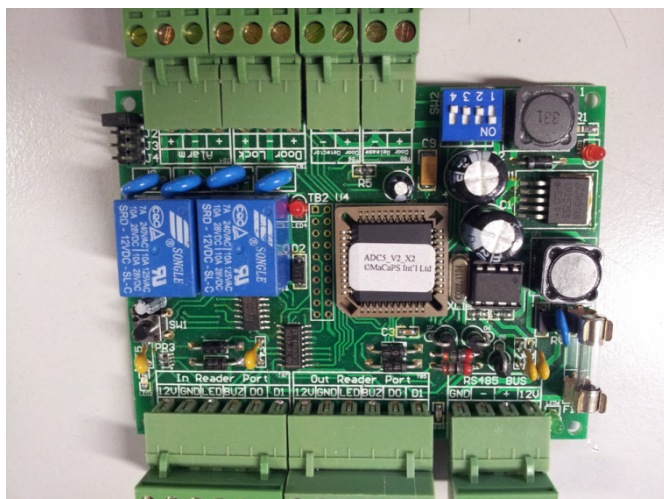


MaCaPS MA1201 Single Door Controller

DATASHEET

PHOTOS



OVERVIEW

The MaCaPS MA1201 is an intelligent Single Door Controller. It incorporates advanced technology and flexible features to meet a wide range of security requirements. It uses standard RS-485 communications protocol to connect to the host system and supports up to two readers (in & out) per unit. The modular design allows for easy, flexible installation and up to 16 units (doors) can be connected via RS-485.

TECHNICAL SPECIFICATION

Part No. MA1201

Power Consumption

Voltage 12VDC
Max. Drawn Current 1A

Host Communication Two-wire RS-485 connection, up to 4000 feet

Reader Interface Wiegand, 24-bit to 44-bit

Supported Reader No. Two, In and Out

Input Port One door sensor input
One door release button input

Output Port One door lock output, relay
One alarm output, relay

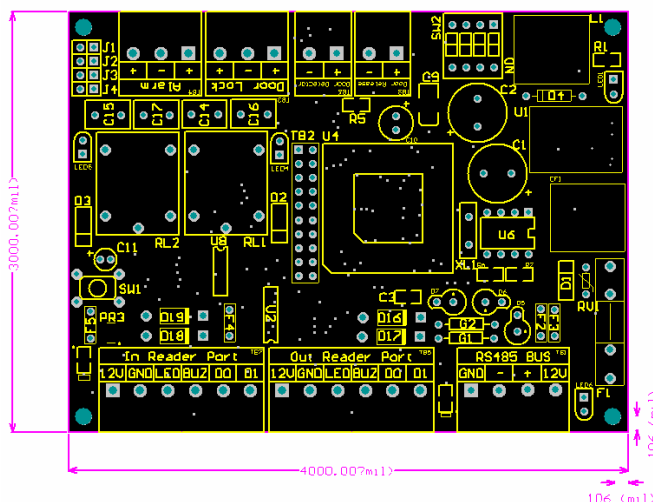
Physical Characteristics

Dimensions L: 102mm, W: 76mm, H: 28mm
Weight 120 g

Environmental

Operating Temperature 0°C – +50°C
Storage Temperature -10°C – +70°C
Humidity 5% - 90% relative humidity,
non-condensing

DIMENSION



OEM SUPPORT

- ❖ Customized design manufacturing is available
- ❖ OEM label is available

HOW TO ORDER

Specify quantity and the following information.

Part No.: MA1201

COPYRIGHT

Information in this document is subject to change without notice. No part of this document may be reproduced or transmitted in any form or by any means, electronic or mechanical, for any purpose, without the express written permission of MaCaPS International Ltd.