

Wiegand to Ethernet Converter

MA3010 is a Wiegand to Ethernet converter. The converter accepts Wiegand data from 26-bit up to 66 bit. When Wiegand data is received, MA3010 automatically encodes the received Wiegand data together with board status into UDP packet and sends out the encoded UDP packet to remote host. The board status information includes on board relay status, input status, and attached reader status. The reader status includes the buzzer status, the green led status, and the Wiegand data if it is detected.

The MA3010 accepts 12V DC power supply. There are two on board relays, two inputs, two LED indicators, one for power status and the other one for communication status between the host and the MA3010. Commands can be sent to the MA3010 through Ethernet interface to control on board relays and attached reader green LED and buzzer.

For ease of development, software API in .net framework 4.5 is provided for developers to develop application to control MA3010.



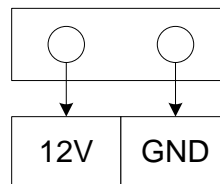
1. Connectors:

There are total 7 pluggable connectors and 1 RJ45 connector located on the MA3010 board serving different functions as described below.

Connector Symbol	Description
J1	12V DC Power Supply
J2	Wiegand Reader Port
J3	Relay 1
J4	Relay 2
J5	Input 1
J6	Input 2
J7	Not used.
RJ45	Ethernet port

1.1 Connector J1

Connector J1 Port Assignment	
Designator	Description
12V	12V DC Power Supply In
GND	Power Supply Ground



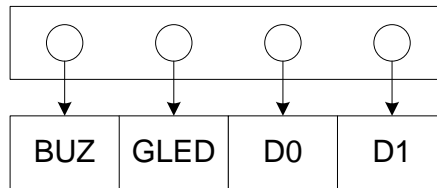
MaCaPS

MaCaPS Inc.
PO Box 347,
Northboro, MA 01532
USA

Phone: (508)393-0573
Fax: (508)329-2015
Email: sales@macapsinc.com
<http://www.macapsinc.com>

Rev20160830

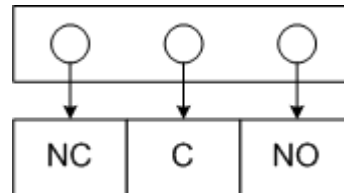
1.2 Connector J2



Connector J2 Port Assignment	
Designator	Description
D1	Wiegand Data 1
D0	Wiegand Data 0
GLED	To Reader G LED
BUZ	To Reader BUZ

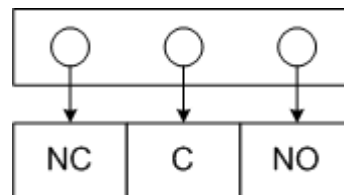
1.3 Connector J3

Connector J3 Port Assignment	
Designator	Description
NC	Normally Close
C	Common
NO	Normally Open



1.4 Connector J4

Connector J4 Port Assignment	
Designator	Description
NC	Normally Close
C	Common
NO	Normally Open



MaCaPS

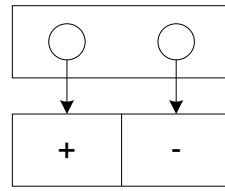
MaCaPS Inc.
PO Box 347,
Northboro, MA 01532
USA

Phone: (508)393-0573
Fax: (508)329-2015
Email: sales@macapsinc.com
<http://www.macapsinc.com>

Rev20160830

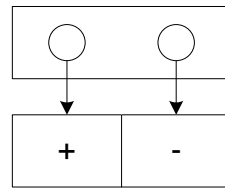
1.5 Connector J5

Connector J5 Port Assignment	
Designator	Description
+	Dry contact input
-	Dry contact input



1.6 Connector J6

Connector J6 Port Assignment	
Designator	Description
+	Dry contact input
-	Dry contact input



MaCaPS

MaCaPS Inc.
PO Box 347,
Northboro, MA 01532
USA

Phone: (508)393-0573
Fax: (508)329-2015
Email: sales@macapsinc.com
<http://www.macapsinc.com>

Rev20160830